

Our Fleet

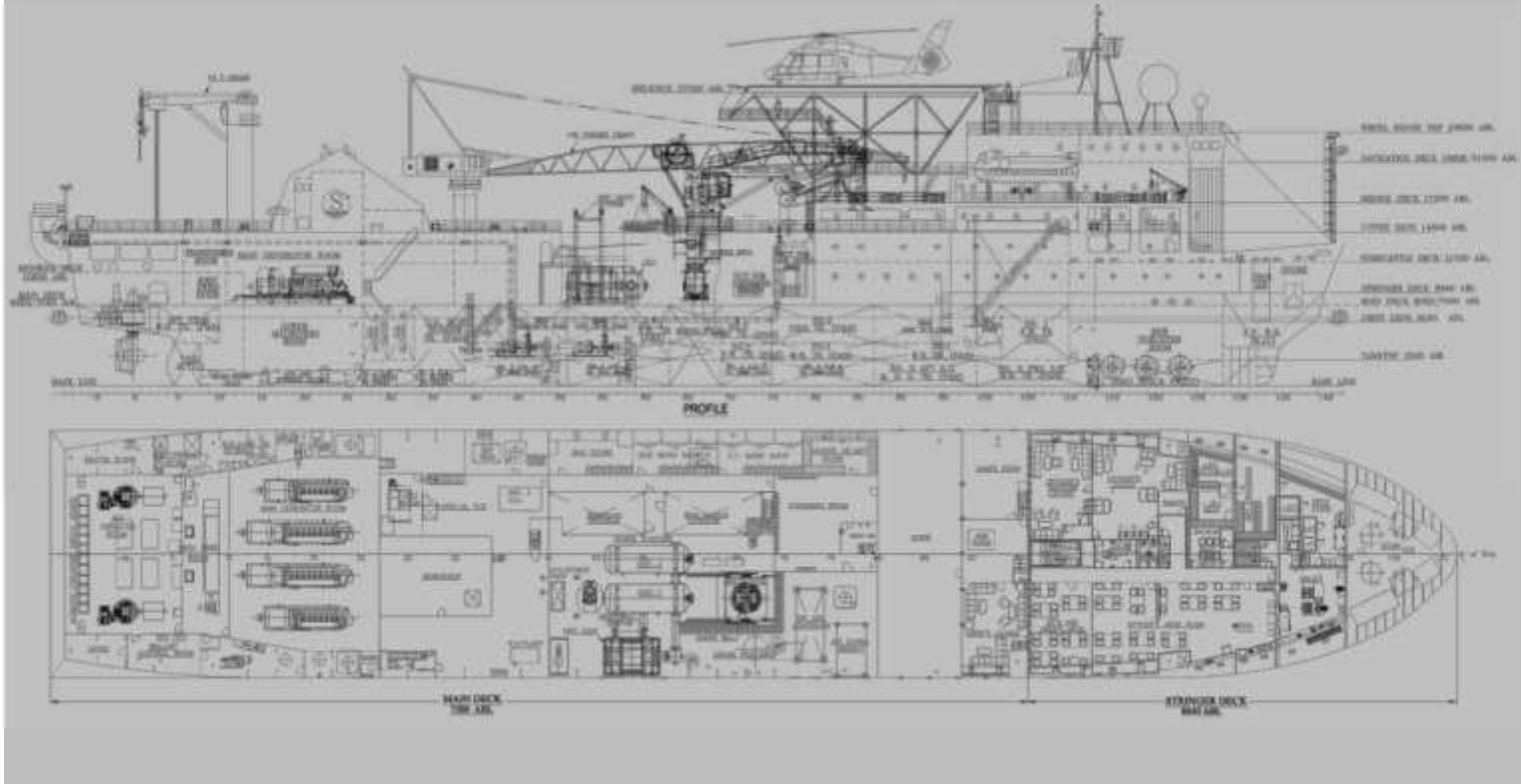
SEAMEC PRINCESS

[A diving support vessel



SEAMEC LIMITED

MMG
MM AGRAWAL GROUP



The Seamec Princess is a dive support vessel, capable of working throughout the year in severe sea and weather conditions.

Capabilities

Built in 1984, the vessel is designed, constructed and certified for worldwide off-shore operations. The Seamec Princess provides services, which include S.B.M maintenance removal and installations, Platform, Riser and Pipeline repairs, inspection & survey, Subsea constructions, Anode installations & deployment of ROV & Grouting operations and Hook up jobs/commissioning.

Diving System

12 Man Saturation diving system certified for 300 MSW. Bell handling system. Gas Mizer reclaim system. 3 Man Diving Bell with moonpool launching arrangement.. HRC with launch & recovery system on Stbd side of the vessel. Kelly Storage capacity is Gas 5,445 m³, Air 808 m³, Treatment Mix 396 m³.

Communication

GMDSS Compliant equipments available onboard.

Dynamic Positioning System

The vessel is fitted with a fully redundant Converteam Duplex Dynamic Positioning system. There is one (Sonardyne, Ranger PRO2) hydroacoustic transducer, two satellite positioning systems (DGPS), one vertical taut wire reference systems and a Laser rader system.

Accommodation

The accommodation is fully air conditioned for a total compliment of 117 persons, comprising:
21 x Single berth cabins
32 x Double berth cabins
08 x Four bed cabins
Additional 02 bed Hospital.

Cranage

The vessel is fitted with One 95.7 T Pedestal Crane, 95.7 T @ 7.6 M & 20T @ 30M. One 50T Knuckle Boom Crane @ 15M. One 10T man riding Pedestal Crane.

Specifications

Principle dimensions

Length overall.....123.4 m
 Length Between pp.....111.84 m
 Breadth Moulded.....21.0 m

Operating draft

Summer draft.....6.455 m

Dead weight.....4364.62 tonnes

Tonnage

Gross Tonnage.....8709 tonnes
 Net Tonnage.....2613 tonnes

Cranage

Main lifting facilities

- 1 x 95.7 ton Pedestal Crane @ 7.6 M on Stbd side
- 1 x 50 ton Knuckle Boom Crane @ 15 M on Stbd side

Additional lifting facilities

- 1 x 10 ton Pedestal Crane (Man Riding) on Port side @ 18 M

Deck space

800 sq.m

Working moonpool 3.6 x 3.6 m

Deck load

10 T/m² fwd of Fr#11
 1 T/m² Aft of Fr#11

Max overall 1,500 T

Capacities

- Marine diesel oil 840 m³
- Fresh water 646 m³

DP system

Converteam Duplex system

Reference Systems

- 1 x HPR (Sonardyne, Ranger PRO2)
- 2 x DGPS (Fugro Seastar 8200 HP +3510LR)
- 1 x Taut wire (Converteam TW901)
- 1 x Laser Rader System (CyScan MK III)

Environmental Regulatory

Number 99/99/98

Power Plant

- 2 x Wartsila 8R32 (3240 kW each)
- 2 x Wartsila 6R32 (2430 kW each)

Total generated power 11,340 kW

Propulsion

Bow

- 3 x Ulstein (375 TV) of 1275 kW each with CPP.

Stern

- 2 x Aquamaster US 3001 of 2400 kW each with FPP.

Endurance

Fuel consumption (typical)

- In port 3.5 m³
- Transit 20 m³
- DP approx 12 m³

Vessel speed

- Maximum speed 10 knots
- Economic Transit Speed 7 knots

Helideck

Bell 212 or similar

Diving system

- Depth rating 300 MSW
- No in sat 12
- No of bells 1 x 3 man
- Bell volume 5 m³
- System volume 55 m³
- Gas storage 5,445 m³
- Reclaim system connected to 3 man bell.

Flag

Indian

IMO No.

8302959

Call sign

AUNJ

Classification

DNV - +1A1 HELDK-S EO DYNPO-SAUTR
 IRS -SUL, IY, SYJ, HELDK, DP (2)

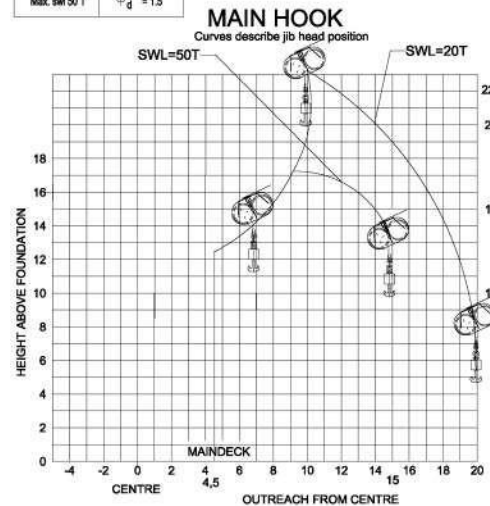
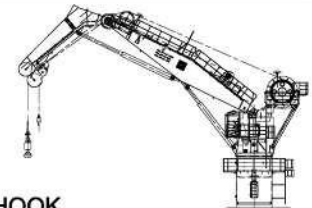
Year built / Builder

1984 at RAUMA REPOLA OY, Finland
 Rebuilt in 2001, Modified in 2008.

TEREX (BOOM LENGTH = 39.6 METRS.)			
RADIUS (MTRS)	BOOM ANGLE (DEG)	360 DEG.RATING (TONNES)	FROM BOOM POINT TO BOOM FOOT (MTRS)
7.6	82.3	95.70 *	39.3
8.0	81.7	90.90 *	39.2
9.0	80.2	81.20 *	39.0
10.0	78.7	72.90 *	38.9
11.0	77.3	66.00 *	38.6
12.0	75.8	60.30 *	38.4
13.0	74.3	55.50 *	38.1
14.0	72.8	51.30 *	37.8
15.0	71.2	47.30 *	37.5
16.0	69.7	44.20 *	37.2
17.0	68.1	41.40 *	36.8
18.0	66.6	38.70 *	36.4
19.0	65.0	36.30 *	35.9
20.0	63.3	34.30 *	35.4
21.0	61.7	32.30 *	34.9
22.0	60.0	30.60 *	34.3
23.0	58.3	29.10 *	33.7
24.0	56.6	27.60 *	33.1
25.0	54.8	26.30 *	32.4
26.0	53.0	25.00 *	31.7
27.0	51.2	23.90 *	30.9
28.0	49.3	22.80 *	30.0
29.0	47.3	21.80 *	29.1
30.0	45.3	20.90 *	28.2
31.0	43.2	20.00 *	27.1
32.0	41.0	19.10 *	26.0
33.0	38.7	18.40 *	24.8
34.0	36.3	17.60 *	23.5
35.0	33.7	17.00 *	22.0
36.0	31.0	16.40 *	20.4
37.0	28.0	15.70 *	18.6
38.0	24.6	15.10 *	16.5
39.0	20.8	14.60 *	14.1

LOAD CHART FOR 100 T CRANE

N.O.F	DYN
Number of fall	Dynamic mode
1	1
Max. SWL 50 T	$\psi_d = 1.5$



LOAD CHART FOR 50 T CRANE



CONTACTS

Seamec Limited

A-901-905, 9th Floor, 215 Atrium,
Andheri-Kurla Road, Andheri East,
Mumbai – 400 093.

India

Phone: + 91 22 66941800

Fax: + 91 22 66941818

Email: contact@seamec.in



www.seamec.in

This document is the property of Seamec and is not intended to be a binding contractual document.
Any information contained herein shall not result in any binding obligation on the part of Seamec, Or
any of its affiliates, and is provided for information purposes only.

